



Tiverton Academy

One School Many Talents

23rd May 2025

Dear Parent/ Carers,

It's hard to believe how quickly the first half of the summer term has flown by, and what a busy and enriching one it's been! Our school value of creativity has truly shone through in so many ways. We were absolutely delighted by the talent on display at our recent art exhibition, showcasing the incredible artistic flair across all year groups. Our Year 6 pupils tackled their SATs with commendable effort and resilience – we are so proud of their hard work. Reception and Year 1 had an exciting and educational visit from the police, learning valuable lessons about safety. Year 2 benefited from an engaging Design and Technology Inspire workshop, sparking their imaginations, while the thought-provoking performance by Loudmouth Theatre Company left a lasting impression on our older pupils. Meanwhile, Year 4 have been diligently preparing for the upcoming Multiplication Times Table Check. It's been a vibrant and productive half term, filled with wonderful learning experiences for all!

Thank you for your continued support and I wish you all a very happy half term break.

Kind regards,
Mrs Dunn.

<u>Date</u>	<u>Event</u>
02.06.2025	Summer 2 term begins - back to school 8.40am
03.06.2025	Y6 class trip to the Safari Park Y3 trip to REP theatre (British Open Squash) Fencing after school club (3.20 - 4.20pm)
04.06.2025	Y6 swimming 1.30 - 3.30pm (weekly on a Wednesday)
09.06.2025	Reception Sports Morning on the playground - start 10am
10.06.2025	Y5/6 residential meeting for parents in the hall 3.30pm
18.06.2025	Class photos/ Y6 leavers

Reception

Our topic this half term has been growth. We have been reading about the very hungry caterpillar and we have even got our own 5 very hungry caterpillars growing in our classroom. They are getting longer every day, we love to see how they are growing and changing and we are even writing our own caterpillar growth diary. We made beautiful petal mandala's after learning about the different parts of a plant. Tiverton even had a visit from Baggie Bird, we scored so many goals against him!



Year 1

Year 1 & Reception have had a special visit from the police. We had a discussion on what to do in an emergency and who to call. We revisited our learning in RHSE (adults we can go to for help). We even got to see a police van with a cell! Many of us inspire to be Police Officers when we are older. In Science and D.T. we are looking at seeds, plants and how things grow. We are also investigating fruits and not fruits. To help with this we are using our Round Robin to discuss our findings.



Year 2

In science, Year 2 have been learning all about the conditions plants need to grow and how to care for them. They have really enjoyed coming in to check on them each day and are looking forward to taking them home. In maths we have recently been looking at mass, capacity and temperature and the children have loved getting to use the equipment to practice measuring things. We have also had our DT Inspire workshop which was a huge success: the children had a great time learning with their parents!



Year 3

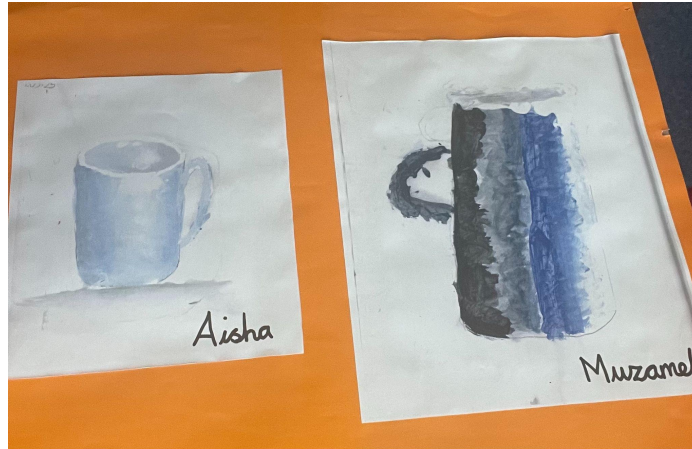
For DT year 3 have been looking at Egyptian collars and learnt how to sew cross-stitch and appliqué. They were given some felt and cut their own shapes/designs and stitched them onto another piece of felt. For maths they have been learning about time, they are now able to tell the time to the minute and five minutes and quarter past/to. For Spanish we have been looking at naming different fruits and how to say which one they like the most and which they do not. Well done year 3 😊



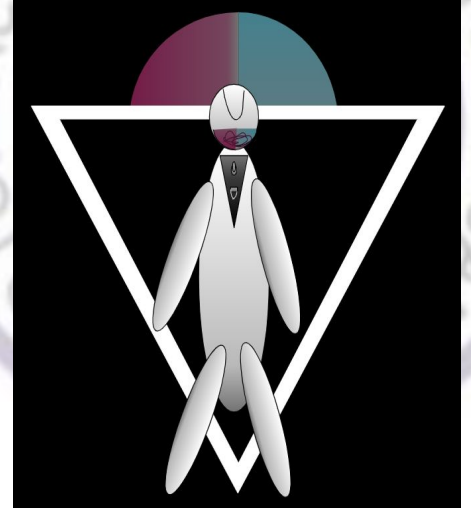
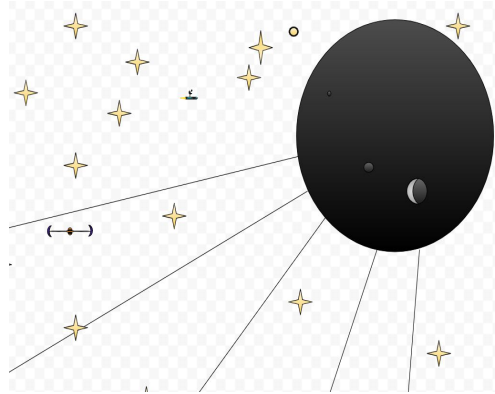
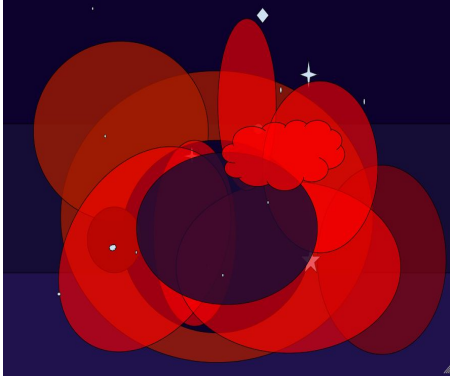
Year 4

In Art, year 4 have been working on still life drawings and paintings.

Children have learnt how to create shade and tint in their art using colours like white and black in order to make their compositions appear more realistic. We have been so impressed with the results. Well done year 4!



Year 5



In Computing, Year 5 have been using Google Drawings to create and develop vector drawings. As you can see, the children were inspired by images of space they had been studying in Art. They have enjoyed the practicality of this unit of work and can pick out shapes used to make a vector drawing, move, resize, and rotate objects they have duplicated using newly learnt keyboard shortcuts, and modify objects to create new images. It's also been a great opportunity to practise this half term's school value, creativity!

Year 6

In computing, Year 6 have been using the free, online, 3D modelling application, *TinkerCad*. They have learned about the drawing plane and how to: add three-dimensional shapes; rotate, resize and lift and lower their shapes using handles; combine, group and recolour the objects that they create; create negative spaces called "holes" in order to make an object able to hold items. They are all wishing we had a 3D printer to test them out on in real life!

In RSHE, they have been learning about how to make sensible lifestyle choices, such as eating a healthy diet and getting good quality sleep, and how these choices affect their wellbeing both in the short-term and the long-term. In the My Magnificent Mind part of their RSHE, they have learned about our mind's animal responses to stressful situations: lion - fight, deer - flight, rabbit - freeze. They have learned how to recognise their body's stress responses and are beginning to think about how these can be controlled and calmed by using the wise owl - making a plan!



Cool Maimu

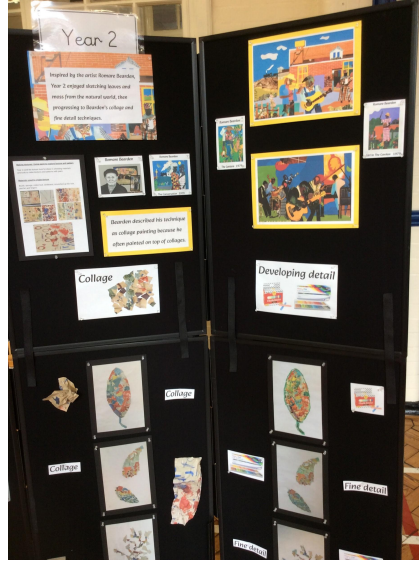
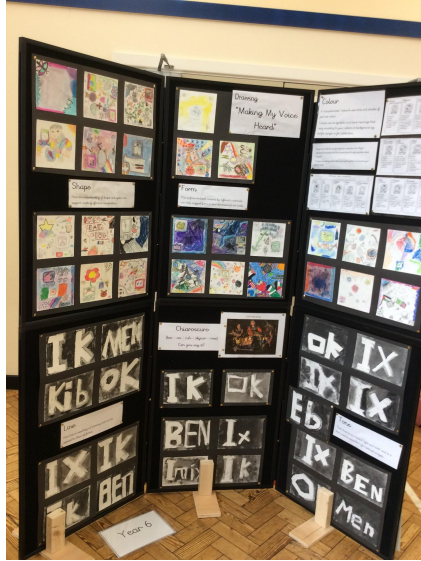


Amazing Benson

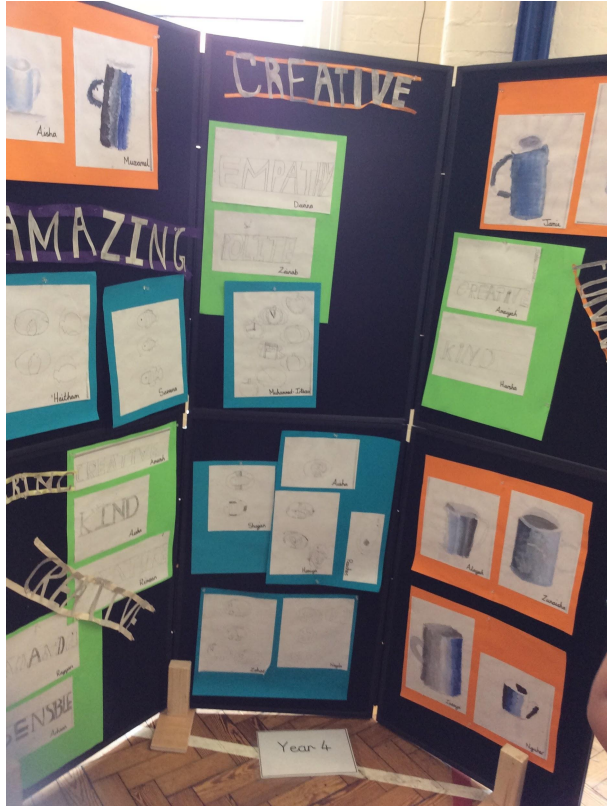


Whole School Art Exhibition

This week, we were excited to welcome our families to the 'Summer Art Exhibition' in the school hall. It was a fantastic showcase of the work that the children from across the have created since our last exhibition back in January. Here are just a few highlights from the event.



Exhibition





Inhalers and other medication will be sent home every term for you to check the use by dates and provide new medication and inhalers if necessary. Please ensure it is sent back to school immediately, thank you.

It is a parents/carers duty to ensure inhalers and medication are in school.

School clubs

A gentle reminder that we are offering a range of before and after school clubs, run by trusted external agencies to enrich your child's learning experience. These clubs provide a wonderful opportunity for your children to explore new interests, develop skills and have fun in a safe and structured environment. Feedback so far has been that the children are LOVING IT!!

The current available clubs are:

- **Fencing - KS2: after school (Tuesday)**
- **Gymnastics - Reception/ KS1/ KS2: before school (Thursday)**
- **Dance - Reception/ KS1/ KS2: after school (Thursday)**

If your child is interested in attending one of the above clubs, please come and speak with Mrs Weblin and she will be able to provide you with all of the information you need.





School office



Please note: the school office opens to parents and carers at 8:40am to allow all staff time to prepare for the day. If you need any assistance before 8.40am, please feel free to call the school office as you will be unable to come into school.

Please note that the toilets are not available for children or parents to use, as they are designated for staff use only. Thank you for your understanding.



Tiverton in Bloom



We're calling out to our Tiverton community for donations to get our Tiverton in Bloom project up and running. We are asking for the following if you are able to donate:

- Seedlings
- Planters
- Flowers
- Pots
- Gardening tools



If you are able to donate any of the following items, please bring them into school, Thank you.

Lateness and the impact on learning

Lateness to school can significantly disrupt a child's learning experience. Arriving late often means missing crucial instructional time, which can affect their ability to grasp foundational concepts. This interruption can also create anxiety or embarrassment, leading to lack of confidence and disengagement. Over time, frequent lateness may contribute to a poor understanding of key lessons, ultimately hindering academic progress and making it harder for children to catch up with their peers.

Listed below is the work your child will be missing if they are late into school (up to 9.30am):

Reception: name recognition, letter formation or tricky word writing, social time with friends (free choice play once morning task has been finished), whole class carpet time - communication and language - going through the date and our visual timetable for the day. Reading or phonics.

Year 1: Morning Maths (3 times a week), practical problem solving sessions (twice a week), handwriting practice and phonics

Year 2: Morning maths, gap task time, spelling and dictation

Year 3: Morning maths and first part of the maths lesson

Year 4: Morning maths and maths interventions

Year 5: Morning maths, going through the daily timetable and the beginning of the maths lesson.

Year 6: Morning maths, and then the first half of the maths lesson (all of the input) and on Wednesdays the start of the science lesson

Tiverton Academy Target Attendance is: 96%

Attendance
for this
half-term

Whole School Attendance for summer 1 half-term 28th April-23rd May 2025: 94.1%

We are aiming to reach our 96% target!

Y6 - 96%
Y5 - 92%
Y4 - 94%
Y3 - 98%
Y2 - 93%
Y1 - 94%
R - 92%

Well done to Year 3 who have the highest attendance



I wonder which class will reach 96% or above next?



115 children have achieved 100% this half-term. Well done!



Reminder: School starts at 8.50am and ends at 3.20pm

We still have a high number of children arriving late each morning. We will be monitoring this closely next term and taking actions to improve this. It is a parent's duty to make sure their child arrives at school on time.

Children can arrive at school between 8.40am and 8.50am. Children arriving after 8.50am are marked as late on the register.

School finishes at 3.20pm, please ensure you are here to collect your child no later than 3.20pm. Persistent late collection will result in your children being looked after by Wrap-Around staff and the Wrap-Around fee of £8.50 will be charged.

Please note Wrap-Around must be booked in advance - please do not assume that if you are late there will be a place in Wrap-Around for your child. You must aim to collect your child on time at 3.20pm and no later.

Attendance

There are 190 days in a school year



100%» Perfection

% equates to

4 Missed school days « 98% » Impressive

8 Missed school days « 96% » Good

9 Missed school days « 95% » Nearly there

11 Missed school days « 94% » Needs to improve

19 Missed school days « 90% » Concerns

29 Missed school days « 85% » Serious concern

Parents are legally responsible for ensuring their children attend school everyday.

With new government measures in place from August 2024 we will be monitoring attendance rigorously next term and contacting parents directly.

Any unauthorised absence or persistent absence will be recorded on your child's attendance records and this may result in legal proceedings against you.

Further information from Bham LA can be found on this link:

[School Attendance - Advice for Parents](#)

If you require support with attendance please do ask the Pastoral Team for support. They will be more than happy to help.

WHAT WE'LL DO TO SUPPORT YOU



- Monitor attendance and timekeeping fortnightly
- Alert you to progress or concerns via letter, text or phone call



- Work with our partners to provide the appropriate support
- Listen to your concerns and make a plan together to improve attendance/timekeeping

Attending school every day and being on time gives the **BEST CHANCE OF SUCCESS**

IN ONE YEAR



MEDICAL APPOINTMENTS



When possible, book them outside of school hours.

ILLNESS



Unless it's serious, bring your child to school and we will keep an eye on them throughout the day.

FAMILY HOLIDAYS



There are 175 days a year when students aren't in school.

95% ATTENDANCE

- 10 days absence
- 50 lessons lost (when 5 lessons a day).

90% ATTENDANCE

OR LESS has a serious impact on education and reduces life chances.

BEING LATE 5

MINUTES EACH DAY over a year, adds up to 3 days lost.



Parking at drop-off and pick-up times

Pick-up and drop-off times are busy outside school. This can cause an increased safety risk to both children and parents/carers.

Parking restrictions outside schools are there to keep you and your children safe. Parking inconsiderately can put people in danger and you also risk being fined. It's important that motorists follow the [Highway Code](#).



Safety tips for parking outside school

When picking up or dropping off children at school, you should do the following:

- Allow yourself plenty of time as the area is likely to be busy.
- Do not allow children to exit the car and run across to school while parked in the middle of the road.
- Do not park on yellow zigzag lines and do not double-park opposite them.
- If necessary, park further away and walk the short distance to school.

**Please
remember**

to park SAFELY!

Put child safety before your convenience

School uniform

It is very important that your child attends school wearing the correct school uniform. The school uniform for the children reflects the ethos and sets a common standard across the school.

All uniform can be bought online
www.brigadeuniformdirect.uk.com

If you do not have access to the internet some items of the school uniform can be purchased in school. Just ask at the school office.


Boys

- School jumper with school logo
- White polo shirt or white shirt
- Grey trousers
- Black school shoes

Girls

- School jumper or cardigan with school logo
- White polo shirt or white shirt
- Grey trousers, skirt or pinafore
- Black school shoes
- Navy blue head scarf (if worn)

A school bag can also be purchased.

✓ SUITABLE	✗ UNSUITABLE
Examples of the type of school shoes that are appropriate:	Examples of the type of school shoes that are not appropriate:
	 Canvas shoes
	 Sports Trainers
	 Non-sensible shoes
	 Branded shoes



PE Kit

From September 2024, children have been coming to school in their PE kits on the days their class has a PE lesson. This has proved very successful and we have received positive feedback from parents/carers.

Please ensure that children continue to wear the correct PE kit on PE days. Maintaining our high standards of appearance is important, even during sports activities. Thank you for your support in keeping our children looking smart and ready to learn.

For PE children must wear:

- Black or blue jogging bottoms, leggings or shorts.
- Plain white t-shirt
- School jumper/cardigan
- Black pumps or plain black trainers



PE days for each class:

Monday: Year 3/ Year 4

Tuesday: Year 2/ Year 3

Wednesday: Reception/ Year 1/ Year 5

Thursday: Year 4/ Year 6

Friday: Year 1/ Year 2/ Year 5/ Year 6

****Monday: Forest school - Reception**

For Forest School, Reception children need to wear:

Clothes and shoes that can get muddy!

- Warm, waterproof clothing
- A long sleeved top
- Jogging bottoms or leggings
- Old trainers
- Please also ensure your child has wellingtons on their Forest School days.



School Year 2024 to 2025

Summer Term 2025

Term Starts: Monday 28th April 2025

Half-term: Mon 26th May 2025 to Fri 30th May 2025

Term ends: Friday 18th July 2025

Training Day: Monday 21st July 2025 - school closed

